

MONTHLY MEMBERSHIP PROGRESS REPORT

LOCATION WEST VIRGINIA

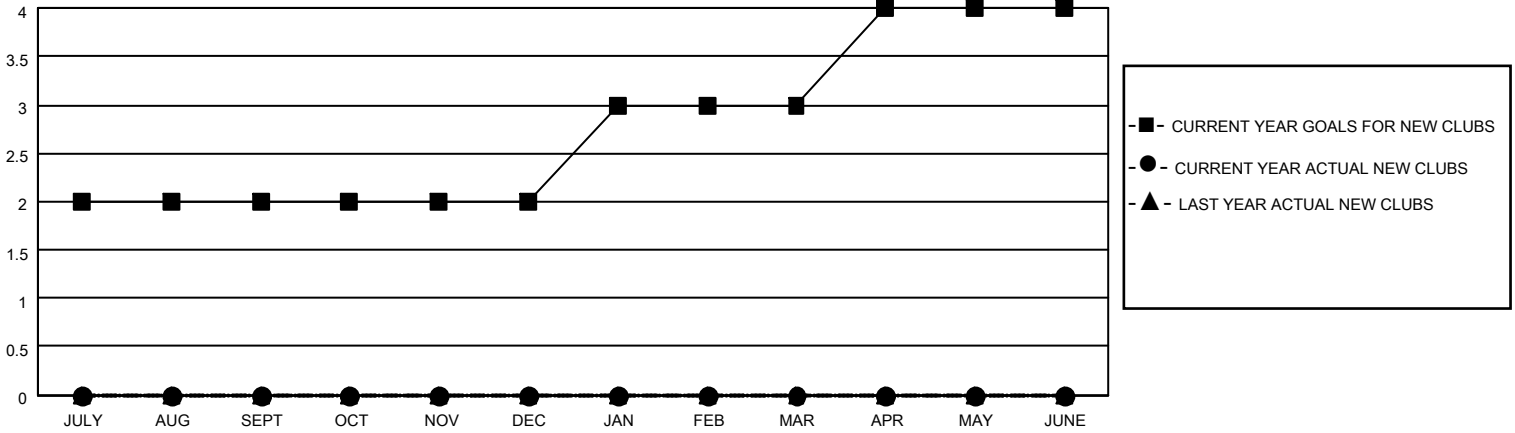
District 29 I

Results as of: 8/31/2023

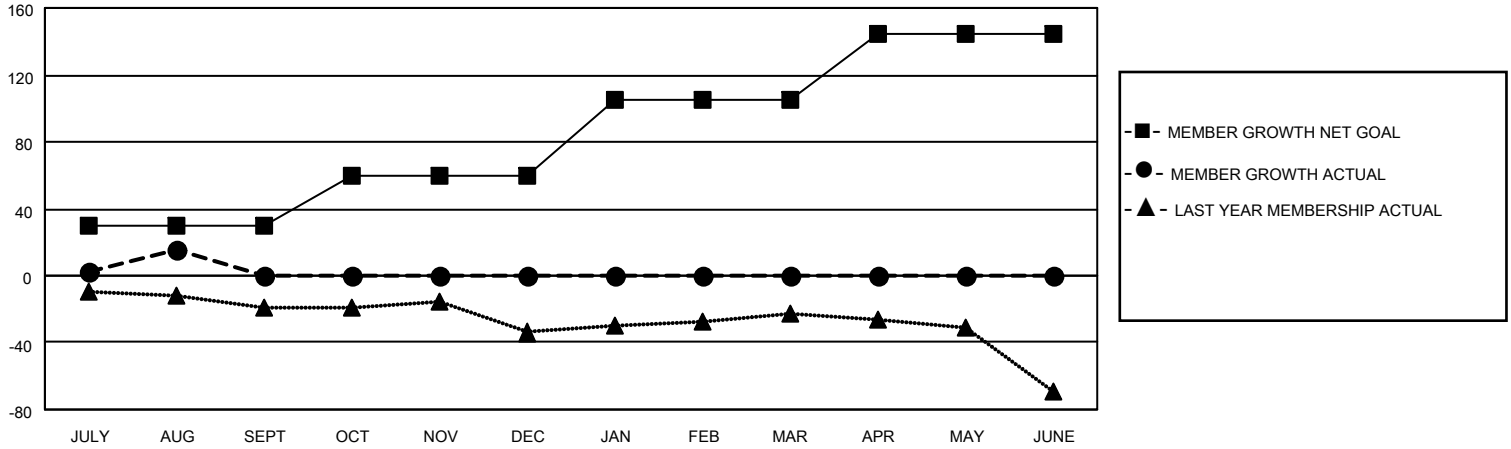
Clubs			
RESULTS FOR 2023-2024			
QUARTER	NEW CLUB GOAL	NEW CLUBS	DROPPED CLUBS
JULY/AUG/SEPT	2	0	0
OCT/NOV/DEC	0	0	0
JAN/FEB/MAR	1	0	0
APR/MAY/JUNE	1	0	0

Members			
RESULTS FOR 2023-2024			
QUARTER	MEMBER GROWTH NET GOAL	MEMBER GROWTH ACTUAL	DROPPED MEMBERS ACTUAL (including transfers)
JULY/AUG/SEPT	30	33	15
OCT/NOV/DEC	30	0	0
JAN/FEB/MAR	45	0	0
APR/MAY/JUNE	40	0	0

GOALS AND ACTUAL NEW CLUBS CUMULATIVE



GOALS AND ACTUAL MEMBERS CUMULATIVE



DROPPED CLUBS: 0

18 CLUBS OF 55 ADDED 1 OR MORE NEW MEMBERS

GENDER DISTRIBUTION

MALE	918 (62.41%)
FEMALE	552 (37.53%)
NON BINARY	0 (0.00%)
PREFER NOT TO ANSWER	1 (0.07%)

DROPPED MEMBERS

[CLICK HERE FOR CUMULATIVE MEMBERSHIP DATA](#)

DECEASED	4
CLUB CANCELLED	0
OTHER	11
TOTAL	15

TOTAL FAMILY UNIT MEMBERS	478
FAMILY MEMBERS PAYING HALF DUES	244